

ATTENTION ALL HCC MEMBERS  
SEMI ANNUAL MEETING

SEMI-ANNUAL SPRING MEETING  
WEDNESDAY, APRIL 5TH, 7:00 PM

TOPICS OF DISCUSSION

- Approval of the 2006-2007 budgets.
- Approval to Change the Honorary Definition in the By-Laws.
- Approval to Change the nights that Men’s League is played.

Please plan to attend.....

**IMPORTANT DATES TO REMEMBER**

April 4 - Course Closed for Aeration (Rain Date April 10)

April 5 - Semi Annual Meeting 7:00 PM HCC

(Discussion of 2006-2007 Budget)

April 5 - Men’s League Registration Deadline

April 7 - Friday Dinner Special, Please make reservations

April 14 - Deadline for Ladies Evening League Registration

April 19 -Wednesday Ladies Golf Starts 8:30 am

April 19 - Board Meeting 7 pm

April 21 - Friday Dinner Special, Please make reservations

April 24 - Men’s League Begins

May 3rd - Wednesday Evening Ladies League “Practice night”

**INSIDE THIS ISSUE:**

Junior Golf Schedule	2
Pool News	
Ladies’ League Info	3
Summer Hours	4
Golf Tips	
American Cancer Society	5
Open Golf Hours	6
Reminders	
Pavilion Use	7
Friday Dinner’s	
Ladies League Reg.	8/9
Junior League Reg.	
April Calendar	10



**CLUB DINING:**

- Beginning April 4th Lunch Hours will be 11 am till 2 pm
- Dinner Hours 4:30-8 pm
- Frozen Pizza, hot dog, chips, popcorn, candy bar, etc. will be available anytime.
- No more TABS



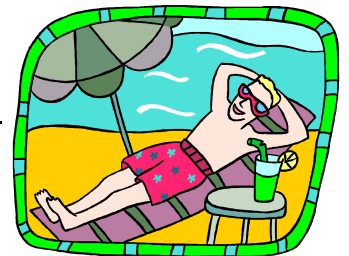
## 2006 Junior Golf Schedule

	<b>Bantam Division</b> <b>8:00 A.M. – 10:00 A.M.</b>	<b>JR./SR. Division</b> <b>10:00 A.M. – Noon</b>
June 2 (Fri.)	1 <sup>st</sup> Session	1 <sup>st</sup> Session (Open Golf)
June 9 (Fri.)	2 <sup>nd</sup> Session	2 <sup>nd</sup> Session (Bob Tays PGA Clinic)
June 16 (Fri.)	3 <sup>rd</sup> Session	3 <sup>rd</sup> Session (Club Champ Qualifying/Open Golf)
June 23 (Fri.)	4 <sup>th</sup> Session	4 <sup>th</sup> Session (Open Golf)
June 30 (Fri.)	No Jr. Golf	
July 7 (Fri.)	5 <sup>th</sup> Session	5 <sup>th</sup> Session (Open Golf)
July 14 (Fri.)	6 <sup>th</sup> Session	6 <sup>th</sup> Session (Open Golf)
July 16 (Sun.)	<b>Junior/Adult Tournament</b> 12:30 P.M. Registration (Course Closed until approx. 4 P.M.) 1:00 P.M. Shotgun Start	



## POOL OPENS—Saturday, May 27th

- Pool Hours will be noon—7 PM Daily
- Pool Party Hours will be from 7 pm—9 pm Daily. Parties are to be scheduled through the pool staff.
- Life Guards for pool parties will be scheduled through the pool staff.
- There will be no exceptions to the pool hours or life guard scheduling.
- Any questions or concerns, please call Dena Henricks at 651-9915, before 9 pm



## Juniors Golf League

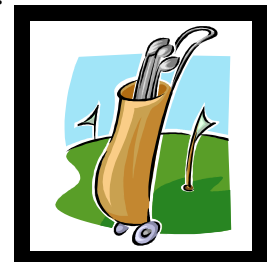
Matt and Missy Loyet have again volunteered their services to Co-Chair the Junior Golf Program.

All Highland Country Club Members 8 through 18 years old (not yet graduated) are eligible for Junior Golf League. Complete the registration form and

return with \$5.00 entry fee by May 19th.

Please show your continued support in helping Matt and Missy with this great program. If you are interested in helping out this season, please give them a call at 654-3614.

Included in this newsletter is a registration Form for the 2006 Junior Golf Program and schedule.



## Wednesday Ladies League (18 Hole League)

The HCC Wednesday Morning Ladies League will start on April 19, 2006, to get the year started. All HCC Ladies are invited to attend. Coffee and donuts will be served at 8:30 a.m., business meeting at 9:00 a.m., followed by nine holes of golf. For those not currently participating in the league, the league is fun, but does provide some competitive aspects for those that enjoy competi-



tion. Players consist of all ages and levels from beginners to avid golfers. It is a great social opportunity for women to play golf on a regular basis and develop a handicap. The first regular 18 hole event will be on April 26, 2006. Check in at 8:30 a.m. and shot gun start at 9:00 a.m.

Any questions, please call me at 654-2530. Hope to see you there!!!

Jan Lanxon  
President



## Wednesday Evening Ladies League (9 Hole Scramble League)

It's almost time for league to begin once again! For those not currently participating in the league, the league is more of a casual "for fun league", but does provide some competitive aspects for those that enjoy competition. Players consist of all ages and levels from beginners to avid golfers. It is a great social opportunity for women to play golf on a regular basis, and socialize afterwards. We would love for you to consider joining the HCC ladies Wednesday night league for a friendly nine holes of scramble play. Bring your own threesome or we will team you up with some others looking for a team. If you cannot commit to every evening, consider signing up as a sub. Subs in the past have had nu-

merous opportunities to come out and enjoy the fun.

As voted on at the end of the year banquet, the fee for the year will be the same as last year, \$25.00 per person on the team, and \$10.00 to participate as a sub. The format of the league will remain the same as last year. Starting time is still 5 p.m. to 5:30 p.m.

May 3<sup>rd</sup> will be a "practice" night and we will meet at the Club House between 5 p.m. and 5:30 p.m. on that night as well. The first night of league will be on May 10<sup>th</sup>. The last night of league will be Aug. 23<sup>rd</sup>, with our banquet on Aug. 30<sup>th</sup>. Mark your calendar!

To sign up, please send the enclosed Registration Form along with your entry fee to Barb Elms **by April 14<sup>th</sup>** (see entry form for mailing address). Make your check payable to Barb Elms. Feel free to call any of us if you have any questions.

We have a lot of fun and hope that you will join us. Please don't hesitate to call any of us if you have any questions or concerns.

Kathy Harris (488-7102), Bobbi Etherton (654-9350) & Barb Elms (654-1760)



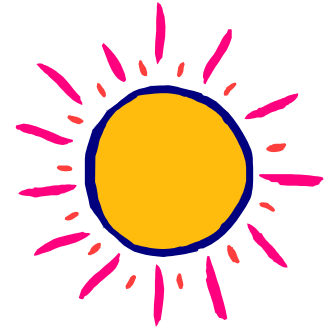
## Summer Hours Begin April 3rd



Lunch Hours:  
11 am till 2 pm  
Dinner Hours:  
4:30 till 8 pm

### Summer Opening Hours:

Sunday	7:00 am
Monday	10:00 am
Tuesday	10:00 am
Wednesday	8:00 am
Thursday	8:00 am
Friday	8:00 am
Saturday	7:00 am



*Don't Forget—  
Daylight Savings time  
begins April 3rd*

## Attention Couples

Starting in May look for Friday Night 9-Hole Couples Scrambles.

(We can pair you with your spouse or not—your choice).

Look for more information in the May Newsletter



Semi Annual Meeting  
7:00 P.M. Wednesday, April 5th

## GOLF TIPS

### Cut the fat out of your shots.

Hitting the ball fat means hitting behind the ball. To correct fat shots you need to move the ball back a little in your stance. Chances are, you have placed the ball too far forward and as a result the bottom of your swing is behind the ball.



### Tension-free putting

Grip your putter with soft hands so that you can control the club without tensing any muscles. The back of your left hand should mirror the face of your putter. Keep the back of your left hand facing your line and your putter face will stay square.

## American Cancer Society Relay For Life of Highland

I am this year's Administrator for Highland's American Cancer Society Relay For Life. I'm not sure if you are familiar with the Relay, but on July 7, over 60 teams (last year's count) of 10 to 15 people each will set up a "tent" on the stadium grounds, raise money in various ways and take part in a continuous 12 hour walk around the track, in which all proceeds go to the ACS for cancer research and advocacy.

Highland's goal last year was to raise \$30,000. The total raised was over \$140,000!! (We received the "Illinois Rookie of the Year" award for the most money raised for a first year Relay!!) Cancer Survivors are also an important part of the Relay, and there were almost 100 survivors who were honored last year. There are many activities taking place through the night, of which one is the, very moving, Luminary Ceremony in which Cancer Survivors and Victims are honored and remembered by family, friends and everyone in attendance.

The event, which includes food and activities, is also open to the public (you do not have to be part of a team to attend). As you can imagine it is quite a task to organize this event. The Relay For Life Steering Committee relies heavily on very generous individuals and organizations in our community to help pull it all together!! At a recent Steering Committee meeting there was a discussion regarding a problem that they encountered last year with the set-up of the Relay at the HHS Football Stadium. It is very difficult for all of the teams to carry their supplies for the night, from the parking lot to their spot in the stadium. Last year there were 2 golf carts available from a donor, which helped tremendously, but was not enough to help everyone.

We are hoping that the HCC or some HCC members would be willing to donate the use of golf carts for a short period of time during the Relay. The Logistics Team will supply trailers for transport of the carts to and from the stadium. There will also be cart drivers available, unless of course (preferably) the owner of the golf cart would be willing to drive the cart for a few hours during the set-up and take-down time, to and from the parking lot to the stadium. I have included some more information below from the Logistics Team.

**Attention: Highland Country Club and Members**

**Who: American Cancer Society Relay For Life, Highland**

**What: In need of golf carts for transporting people and camping supplies from the parking lot, to and from the stadium.**

**Where: Highland High School Football Stadium**

**When: Friday, July 7, 2006 / set-up starting at 10:00 am. Take-down ending on Saturday, July 8, 2006 at 10:00 am (possibly earlier).**

Terry Brown and Jan Schneider (RFL Logistics Chair and Co-Chair) would like to request the use of golf carts during the 2nd Annual Relay For Life, Highland, IL. The Logistics Team will be responsible for transportation of carts to and from the Relay. A new rule was put in place this year that NO ONE under the age of 21 will be allowed to drive any of these carts. **Please contact Vicki Pabst at 654-4794.**

If anyone would like more information regarding the Highland Relay for Life including, forming or participating in a team, donations, participating as a Cancer Survivor or remembering or honoring a Cancer Survivor or Victim with a Luminary Bag (a remembrance candle which is lit during a special ceremony), please contact Deanna Harlan, Relay For Life Chair, at 654-5468. You may also visit our web site <http://www.acevents.org/relay/il/highland>

## Open Golf Course Hours During The Summer

Monday - Open all day

Tuesday - Open until 4 pm

Wednesday - Open before 8 am and between 2 pm—5 pm

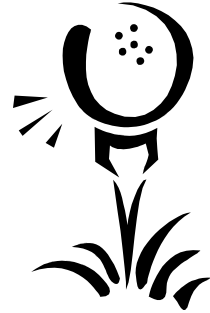
Thursday - Open before Noon

Friday - Open before 8 am and after 12 Noon

Saturday - Open All Day

Sunday - Morning tee times and open after 11:30 am

(All other times are given to Men's, Women's and Junior's Leagues. Any exceptions to these hours will be announced in the newsletter. Clubhouse is open to all members at all times during hours of operation.)



**You need to be 16 years old with a Driver's License to drive a golf cart on the Course. You need to be 18 to rent a cart from the Highland Country Club.**



## Reminders

- ◆ **Green Fees:** 9 holes \$12.00; 18 holes \$18.00 **Cart Fees:** 9 holes \$8.00; 18 holes \$15.00
- ◆ **All beverages consumed on the property are to be purchased in the Clubhouse (Counting toward you \$30 monthly minimum)**
- ◆ **There will be a \$2.00 service charge for cash advances on debit cards.**
- ◆ **Only groups of 4 or less** are allowed to play during the golf season from May 1 to September 30th. No 5's or 6's please.
- ◆ **Remember that \$30 monthly minimums are in effect.** All minimums must be made through general bar and food service. Greens fees and cart rentals DO NOT Apply.
- ◆ **Friday evening specials** will be available every other Friday starting with September 2nd. The Friday evening menu will be posted by Wednesday of each week.
- ◆ **Please remember that members are not allowed in the kitchen, behind the bar or in the office.** If you need something from these areas, please check with someone on duty at the club. Thanks
- ◆ **Golf Carts!!** Please keep golf carts out of the clubhouse doorways.
- ◆ **Also, remember that you must be 16 years of age with a Driver's license to drive a golf cart.**

# Openings for 2006-2007 Golf Memberships

There are still some openings for the 2006-2007 Golf Season. If you know anyone who would like to going, please contact Kevin Hemann at 654-5671.



Remember that you do not so often win holes as the result of your own brilliant play as by the mistakes that the other man makes. -James Braid

I never learned anything from a match that I won. - Bobby Jones

Don't be afraid of the player with a good grip and a bad swing. Don't be afraid of a player with a bad grip and a good swing. The player to beware of is the one with the bad grip and the bad swing. If he's reached your level, he has grooved his faults and knows how to score. - Harvey Penick

Every golfer in on his honor. - Donald Ross

## Pavilion Use

The pavilion is available for all Country Club members to use.

Please sign up in the clubhouse for available dates.



**Next Newsletter Deadline  
Friday, April 21, 2006**

## Private Parties & Meetings



The clubhouse is available for private parties and meetings of all kinds.

**See Clubhouse Staff for details**

Remember that if you book a party at the club you need to remind your guests that there is **NO SMOKING** in the dining room.



## Friday Night Buffet's

Please Call the Clubhouse for Reservations 654-GOLF

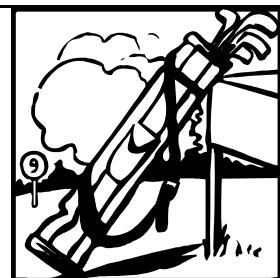
There will be a Buffet every other Friday night. Please call the clubhouse for details.

Here are the upcoming dates:

April 7th

April 21st

May 5th



# 2006 WEDNESDAY EVENING LADIES LEAGUE REGISTRATION FORM

**LEAGUE FORMAT: 3 LADY SCRAMBLE**

TEAM NAME: \_\_\_\_\_

TEAM MEMBERS

PHONE #

WORK PHONE

---

---

---

---

**SUB LIST ONLY:** \_\_\_\_\_

PHONE # \_\_\_\_\_ WORK PHONE \_\_\_\_\_

**I WANT TO BE ON A TEAM:** \_\_\_\_\_

PHONE # \_\_\_\_\_ WORK PHONE \_\_\_\_\_

**TOTAL ENCLOSED: \$** \_\_\_\_\_

**NOTES:**

- 1) Only 1 member of the team needs to submit the form with check for team. \$25.00 per person.
- 2) If you want to be a sub only, please complete "sub list only" line. (\$10.00 fee)
- 3) If you want to be on a team, but don't have one, complete that line and send \$25.00 fee.
- 4) Return registration form & entry fee by April 14<sup>th</sup>.
- 5) Practice night is May 3rd, 5-5:30 p.m.
- 6) League starts on May 10<sup>th</sup>, 5-5:30 p.m.
- 7) Last night of league play is Aug. 23 & banquet is on Aug. 30.

**MAIL REGISTRATION FORM & ENTRY FEE (payable to Barb Elms) BY APRIL 14<sup>TH</sup>, TO:**  
BARB ELMS  
502 E. DOLPHIN DRIVE  
HIGHLAND, IL 62249

CALL US IF YOU HAVE QUESTIONS...

KATHY HARRIS - 488-7102  
BOBBI ETHERTON - 654-9350  
BARB ELMS - 654-1760





2006  
**Highland Country Club**  
**Junior Golf Program**  
**Entry Form**

**ELIGIBILITY:** ALL HIGHLAND COUNTRY CLUB MEMBERS 8 THROUGH 18 YEARS OLD (NOT YET GRADUATED) AS OF 6-2-06.

**ENTRY:** SIGN UP TO ATTEND THE FRIDAY MORNING JR GOLF PROGRAM BY COMPLETING THIS FORM AND RETURNING IT BY MAY 19, 06 ALONG WITH A \$5.00 ENTRY FEE (USED TO DEFRAY THE COST OF RUNNING THE PROGRAM AND TOURNAMENTS) TO:  
HIGHLAND COUNTRY CLUB  
ATTN: JUNIOR GOLF PROGRAM  
P.O. BOX 235  
HIGHLAND, IL 62249

PLEASE MAKE CHECKS PAYABLE TO THE HCC JUNIOR GOLF PROGRAM

NAME	AGE AS OF 6-3-05	GRADE ENTERING

ADDRESS \_\_\_\_\_

PHONE \_\_\_\_\_

ARE YOU OR ANY FRIENDS OR RELATIVES INTERESTED IN...

YES\_\_\_ NO\_\_\_ DRIVING GOLF CARTS TO TRANSPORT CLUBS  
FOR THE BANTAM DIVISION?  
YES\_\_\_ NO\_\_\_ HELPING WITH TOURNAMENTS?

**DIVISIONS AND SCHEDULES TO BEGIN FRIDAY JUNE 2, 06**

**BANTAMS:** 8:00 – 10:00AM GOLFERS 8 TO 11 YEARS OLD  
(NOT ENTERING MIDDLE SCHOOL)

**JUNIORS:** 10:00AM GOLFERS WHO WILL BE IN MIDDLE  
SCHOOL IN THE FALL OF '06

**SENIORS:** 10:00AM GOLFERS WHO WILL BE IN HIGH  
SCHOOL IN THE FALL OF '06

NAME OF PARENT(S) OR GUARDIAN(S) \_\_\_\_\_

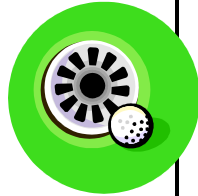
SIGNATURE (OF A PARENT OR GUARDIAN) \_\_\_\_\_

IF YOU HAVE ANY QUESTIONS, PLEASE CONTACT  
MATT OR MISSY LOYET AT 654-3614

# April 2006

## Summer Opening Hours:

Sunday 7:00 am  
 Monday 10:00 am  
 Tuesday 10:00 am  
 Wednesday 8:00 am  
 Thursday 8:00 am  
 Friday 8:00 am  
 Saturday 7:00 am



## Open Golf During Summer:

**Monday** - Open all day

**Tuesday** - Open until 4 pm

**Wednesday** - Open before 8 am and between 2 pm—5 pm

**Thursday** - Open before Noon

**Friday** - Open before 8 am and after 12 Noon

**Saturday** - Open All Day

**Sunday** - Morning tee times and open after 11:30 am

(All other times are given to Men's, Women's and Junior's Leagues. Any exceptions to these hours will be announced in the newsletter. Clubhouse is open to all members at all times during hours of operation.)

Sun	Mon	Tue	Wed	Thu	Fri	Sat
						1
2	3	4	5 General Membership Mtg. 7pm	6	7 Dinner Specials	8
9	10	11	12	13	14	15
16	17	18	19 Ladies Day League Begins Board Mtg 7pm	20	21 Dinner Specials	22
23	24	25 Men's League Begins	26	27	28	29
30						



Highland Country Club  
 Route 40  
 PO Box 235  
 Highland, IL 62249

Phone: 618-654-4653 (GOLF)  
 Fax: 618-654-8158  
 Email: HCCGolf@hometel.com





## Highland Country Club

Highland Country Club  
Route 40  
PO Box 235

Phone: 618-654-4653 (GOLF)

Fax: 618-654-8158

Email: HCCGolf@hometel.com



E-mail articles for  
newsletter to:  
[hccnews@hometel.com](mailto:hccnews@hometel.com)

## Board of Directors

### ONE YEAR TERM

Brad Frank	Treasurer, Budget, & Audit Committee	654-3151
Rodney Miller	Golf Course & Budget	654-4801
Dena Henricks	Newsletter Editor & Pool	654-7489
Ken Tebbe	Cart Shed	654-3525
Matt Loyet	Vice President, Golf Course, Jr. Golf & All Structures	654-3614

### TWO YEAR TERM

Jerry Miller	President of Board	651-9015
Ryan Korte	Technology, Tournaments & Golf Functions	654-8213
Kevin Hemann	Secretary & Membership	654-5671
Bobbi Etherton	Clubhouse, Social & Budget	654-9350
Steve Lanxon	Clubhouse, Social & Budget	654-2530

Next Board Meeting  
7:00 P.M. Wednesday, April 19th

## Golf Course News.....

The greens have been mowed several times through the winter.

Course will be closed April 4th for aeration (April 10th will be the rain date)

Please obey the "Cart Paths Only" sign. This sign when posted means "Cart Paths Only". Orange handicap flags will also obey this sign. You may not cross on high ground to retrieve balls when the "Cart Path Only" sign is posted. You will need to walk or hit your ball near the cart path! You shouldn't have to be told. The end of Winter and the beginning of Spring is a very wet time of the year, so expect and respect the signs. Before you know it, it will dry out and the 90 degree rule

will be in effect. The course will also be closed on certain days just like last year, for chemical applications. This is for a few hours in the morning. This will allow chemicals to dry and then it will be safe for reentry.

Thanks for your cooperation and don't forget to fix those ball marks on the greens.



### Wanted: Email Addresses

If you want to be included in email updates of Club activities and specials, please email [hccgolf@hometel.com](mailto:hccgolf@hometel.com) and request to be added to the list. This is a great way to get last minute Specials and reminders of upcoming events. Also, our newsletter is sent via email, so please let us know your email address.